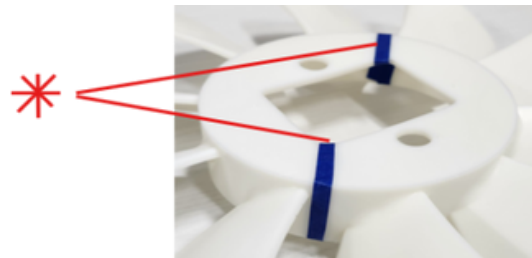




BX KUBOTA 2-PC TRANSMISSION COOLING FAN

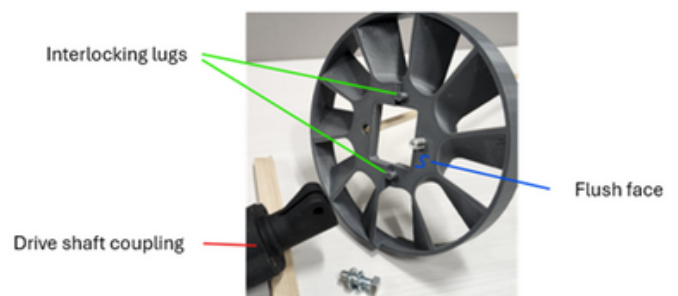
01

Remove damaged part by cutting fan hub in two places. Then remove both mounting bolts and pull fan hub clear of drive shaft



02

Slip both halves of the new Field Ready fan around the drive shaft (aligning the two interlock lugs) with the flush surface facing the drive shaft coupling.



03

Insert M8-1.25x25mm bolts, lock washers, flat washers (supplied) and tighten to secure fan hub.

Note: While care has been taken in the design of this part, it is an after-market replacement part that has been developed for easier and quicker installation. It is not manufactured by the original equipment manufacturer. Fit, performance, and durability may vary slightly and may limit OEM warranty coverage for directly associated components. The purchaser assumes all responsibility for proper installation and use.